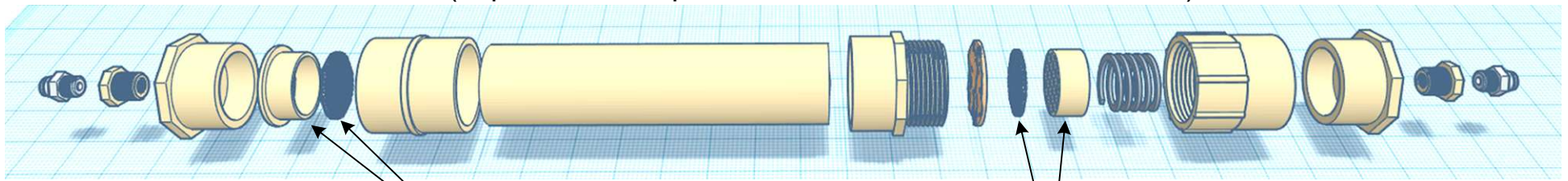


Oxygen Concentrator Sieve Assembly - with Labels

(Important: PVC parts should be schedule 40, not DWV)



This Screen mesh is placed inside Drain Cover and sealed around the edge

This Screen mesh is glued to the outside of Drain Cover and sealed around the edge

3" PVC Schedule 40 Pipe, 17" long

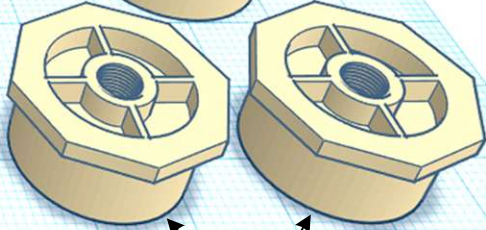
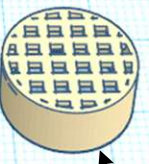
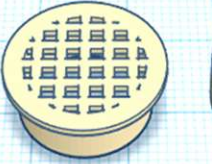
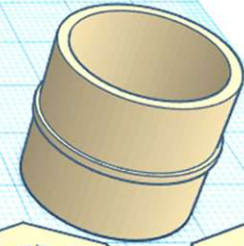
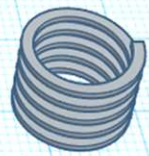
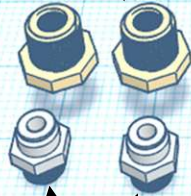
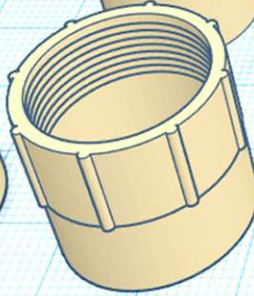
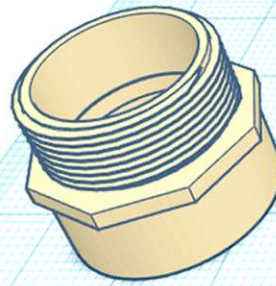
Fine Stainless Steel Mesh, 80 mesh to 120 mesh 3" diameter

Non Woven Fiber Filter 4" diameter

3" PVC Coupling Socket

3/4" x 3/8" PVC Reducer Bushing MIPT x FIPT

Steel Compression Spring 2" diameter, 2" high, 50 lb/in.



3" PVC Male adapter MIPT x Socket

3" PVC Female Adapter Socket x FIPT

3/8" MNPT to 3/8" push-to-connect Tube

3" PVC Round Snap-In Floor Drain

3" PVC Round Snap-In Floor Drain with lip trimmed off and sanded to fit inside 3" Male threaded coupler

3" x 3/4" Reducer Bushing, Flush Style - Spig. X FIPT